

# PRODUCT INFORMATION PACKET

Model No: 056S17D7203

Catalog No: B388

Fan and Blower Motor, 0.33 & 0.11 HP, 1 Ph, 60 Hz, 115 & 115 V, 1800 & 1800 RPM, 56 Frame, DP



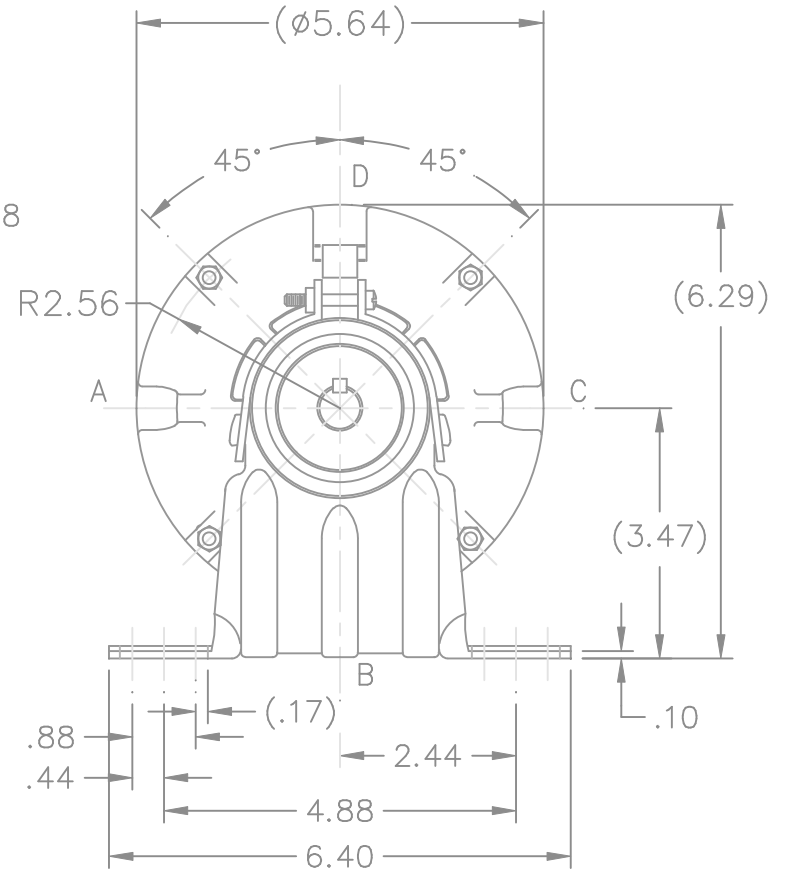
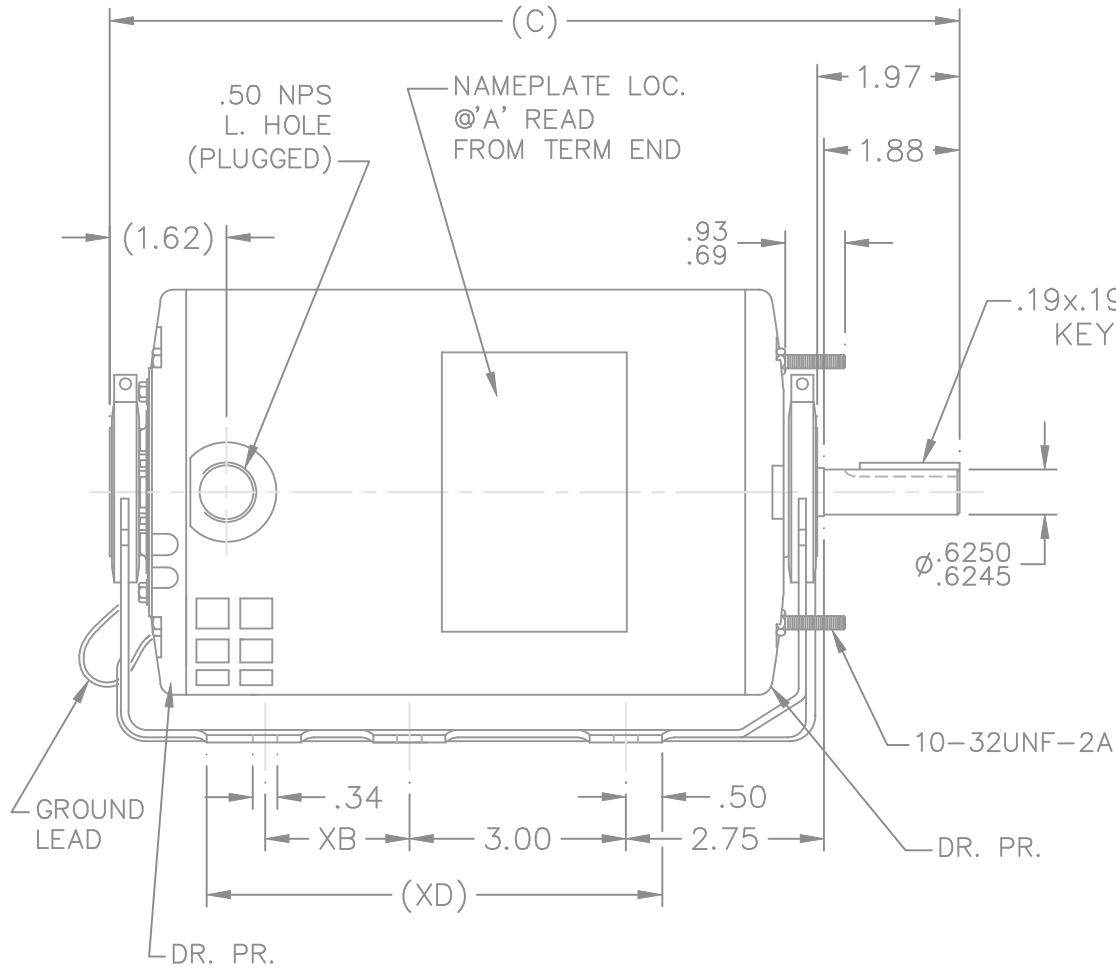
Regal and Marathon are trademarks of Regal Rexnord Corporation or one of its affiliated companies.  
©2024 Regal Rexnord Corporation, All Rights Reserved. MC017097E

### Nameplate Specifications


Phase	1	Output HP	0.33 & 0.11 Hp
Output KW	0.25 & 0.08 kW	Voltage	115 & 115 V
Speed	1725 & 1140 rpm	Service Factor	1.35 & 1.35
Frame	56	Enclosure	Drip Proof
Thermal Protection	Automatic	Efficiency	59.6 %
Ambient Temperature	40 °C	Frequency	60 Hz
Current	5.3 & 2.9 A	Power Factor	71
Duty	Continuous	Insulation Class	B
Design Code	2VT	KVA Code	M
Drive End Bearing Size	6203	Opp Drive End Bearing Size	6203
UL	Recognized	CSA	Y
CE	N	IP Code	22
Number of Speeds	2		

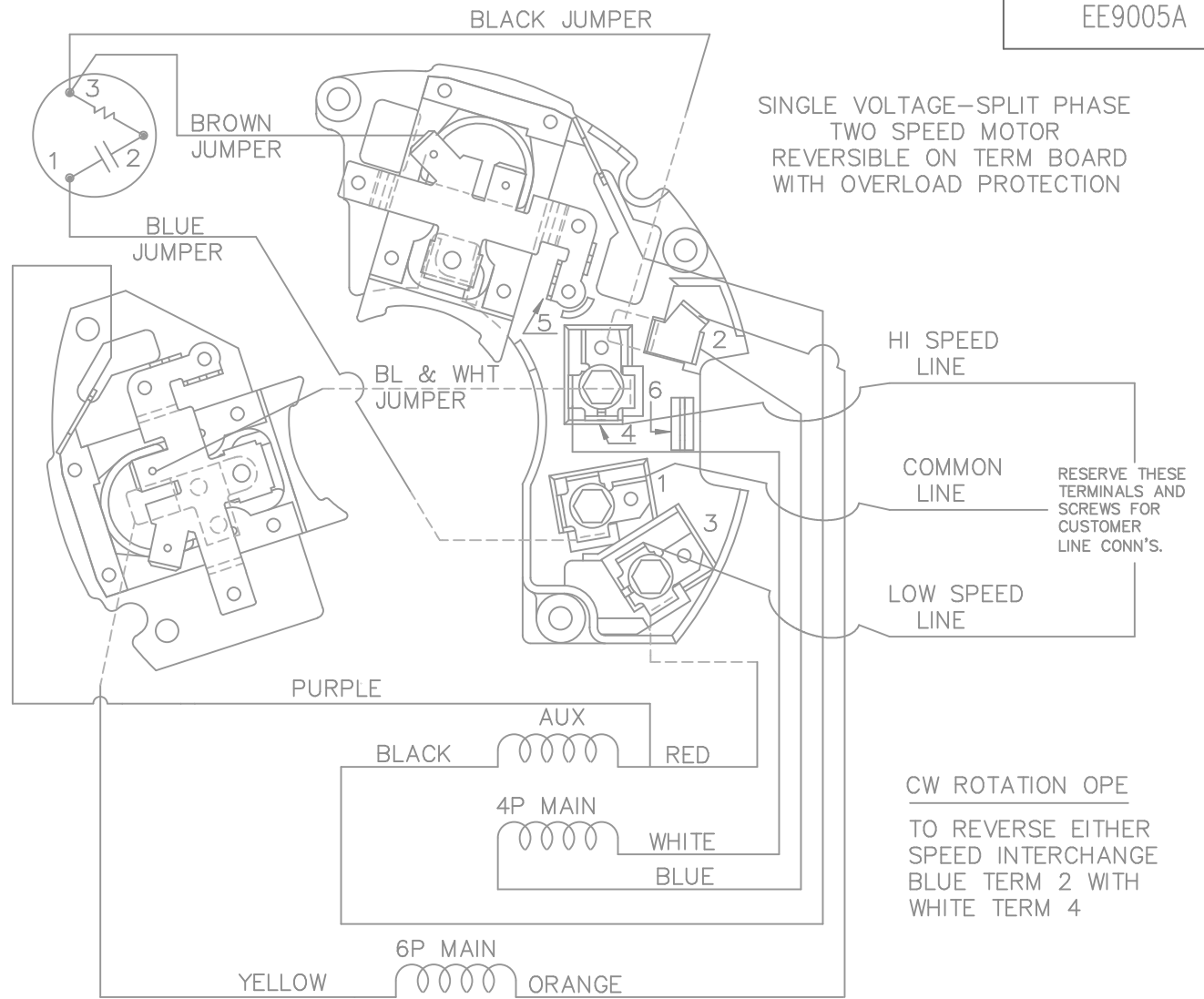
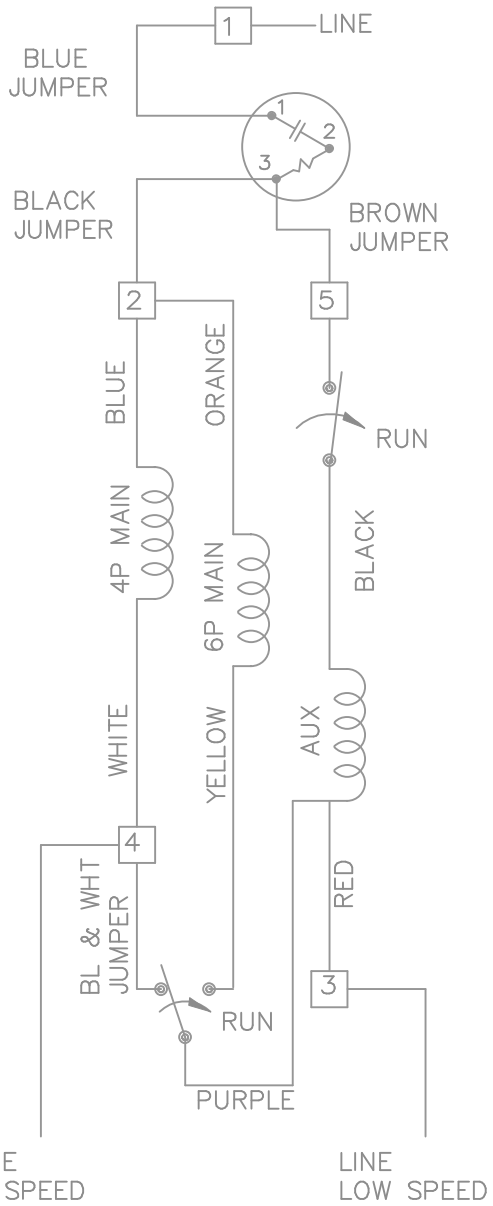
### Technical Specifications

Electrical Type	Split Phase	Starting Method	Across The Line
Poles	4//6	Rotation	Selective Counterclockwise
Resistance Main	0 Ohms	Mounting	Resilient Base - Extended Studs
Motor Orientation	Horizontal	Drive End Bearing	Ball
Opp Drive End Bearing	Ball	Frame Material	Rolled Steel
Shaft Type	T	Overall Length	10.78 in
Shaft Diameter	0.625 in	Shaft Extension	1.88 in
Assembly/Box Mounting	F1 Only		
Connection Drawing	A-EE9005A	Outline Drawing	A-SS73600-675



DASH	C	XB	XD
675	10.78	2.00	6.31

				TOLERANCES UNLESS SPECIFIED			DRAWN BRH 08-04-1995	
NO.	REVISION	BY & DATE	CHK	ANG	FINISH		SCALE	3=8
7	UPDATED DRAWING	RJW 04-25-2007		DEC.	INCHES	TITLE OUTLINE	CHK	DA 08-08-1995
6	ADDED COLUMNS FOR 'XB' AND 'XD' TO TABLE	DRS 10-29-2002	ML	.X	±.1		APPD	GK 08-08-1995
5	RE-ISSUE; ADDED DASH TABLE CN 20750-76	DRS 12-19-2000		.XX	±.03		REF	
4	REDRAWN ON CADD, STUD BOLT EXT. WAS .69/.88 CN 20750-76	BRH 08-08-1995		.XXX	±.005		FMF	
				.XXXX	±.0005	MAT'L.	PREV	
				±7'30"		FINISH		
THIS DRAWING IN DESIGN AND DETAIL IS OUR PROPERTY AND MUST NOT BE USED EXCEPT IN CONNECTION WITH OUR WORK ALL RIGHTS OF DESIGN AND INVENTION ARE RESERVED THIS IS AN ELECTRONICALLY GENERATED DOCUMENT - DO NOT SCALE THIS PRINT				RFP	CAD FILE ss73600		SIZE	DRAWING NO. PAGE OF REV.
				DIST	WP		A	SS73600 7



SINGLE VOLTAGE-SPLIT PHASE  
TWO SPEED MOTOR  
REVERSIBLE ON TERM BOARD  
WITH OVERLOAD PROTECTION

HI SPEED LINE  
COMMON LINE  
RESERVE THESE TERMINALS AND SCREWS FOR CUSTOMER LINE CONN'S.  
LOW SPEED LINE

CW ROTATION OPE  
TO REVERSE EITHER SPEED INTERCHANGE  
BLUE TERM 2 WITH  
WHITE TERM 4

VIEWING TERMINAL END

NOTE:  
DASH LINES INDICATE LEADS CONNECTED  
TO MOTOR SIDE OF SWITCH

NO.	REVISION	BY & DATE	CHK	TOLERANCES UNLESS SPECIFIED		MARATHON ELECTRIC	DRAWN ML 06-23-1988			
				DEC.	INCHES			CHK	GK 06-23-1988	
3	MOVED BROWN JUMPER LEAD FROM TERM 2 TO TERM 3 ON PROTECTOR CN 6360	DA 10-26-1990	.X	±	-	TITLE CONNECTION DIAGRAM 48 FR. TWO SPEED	APPD DRN 06-23-1988			
2	ADDED CUSTOMER CONN. NOTE CN 6011	BW 08-03-1989	.XXX	±	-		SCALE 1=1			
1	NEW DRAWING	ML 06-23-1988	.XXXX	±	-		REF			
			ANG	±	-	MAT'L.	FMF			
						FINISH	PREV			
THIS DRAWING IN DESIGN AND DETAIL IS OUR PROPERTY AND MUST NOT BE USED EXCEPT IN CONNECTION WITH OUR WORK ALL RIGHTS OF DESIGN AND INVENTION ARE RESERVED THIS IS AN ELECTRONICALLY GENERATED DOCUMENT - DO NOT SCALE THIS PRINT			RFP	CAD FILE EE9005A			SIZE A	DRAWING NO. EE9005A	PAGE OF	REV. 3
			DIST WP							